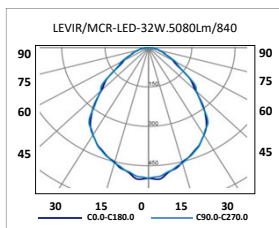


RECESSED - SURFACE IP40 • LED



RECESSED - SURFACE LED LEVIR/MCR



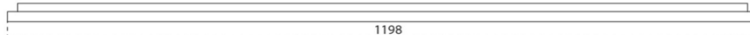
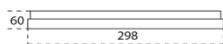
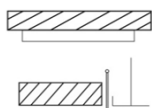
**SURFACE
LEVIR/MCR-S
(1200x300)**

**RECESSED
LEVIR/MCR
(1200x300)**

Mounting	Surface.
Light source	Tridonic LED linear modules SMD Made in EU.
Optical system	Microprism diffuser.
Light distribution	Direct.
Wiring	Electronic control gear (EEI=A+). PF>0,95. TRIDONIC made in Serbia. Possibility of incorporating dimmable electronic control gear (DALI) and/or emergency kit (3 hours).
Material	Body: White lacquered steel with anti-corrosive treatment according to ENEC-10 and VDE standards. Diffuser: Conical microprism of great transparency and purity, made of polycarbonate with antiglare optical system, with maximum light output and soft and diffuse reflection of great relaxing power.
Surface finish	Body: White colour RAL 9003.
Benefits	LED luminaire with integrated electronic control gear. Colour rendering index Ra>80. Average service life > 50.000 hours. Does not require maintenance. No infrared or UV radiation. Easy installation.



Mounting



AVAILABLE



CODE	REFERENCE	Mounting	Light	Power	Efficiency	CRI (Ra)	Colour temp. CCT (K)	DIMM DALI	Emergency MC-1
			output lm	W	LED module + Driver lm/W				
LME315K0B	LEVIR/MCR-32W. 5080lm/840 TR (1200x300)	Empotrable	5080	32	159	>80	4000	✓	✓
LMS315K0B	LEVIR/MCR/S-32W. 5080lm/840 TR (1200x300)	Adosable	5080	32	159	>80	4000	✓	✓