

T-5 Suspended very Low Luminance Luminaires (46mm)



New range of luminaires with the latest tendency. Minimalist designed luminaires with a very low profile (46mm) for direct light distribution.

The luminaire is for assembling by suspensions already included on the luminaire.

Recommended for space where a medium luminous intensity is needed, VDT, DSE, workspaces, halls, etc.

LUMINAIRE HOUSING: Made of extruded aluminium profiles and steel sheet finished with electrostatic powder coat finish in grey colour (RAL 7001) grey aluminium-fine structure.

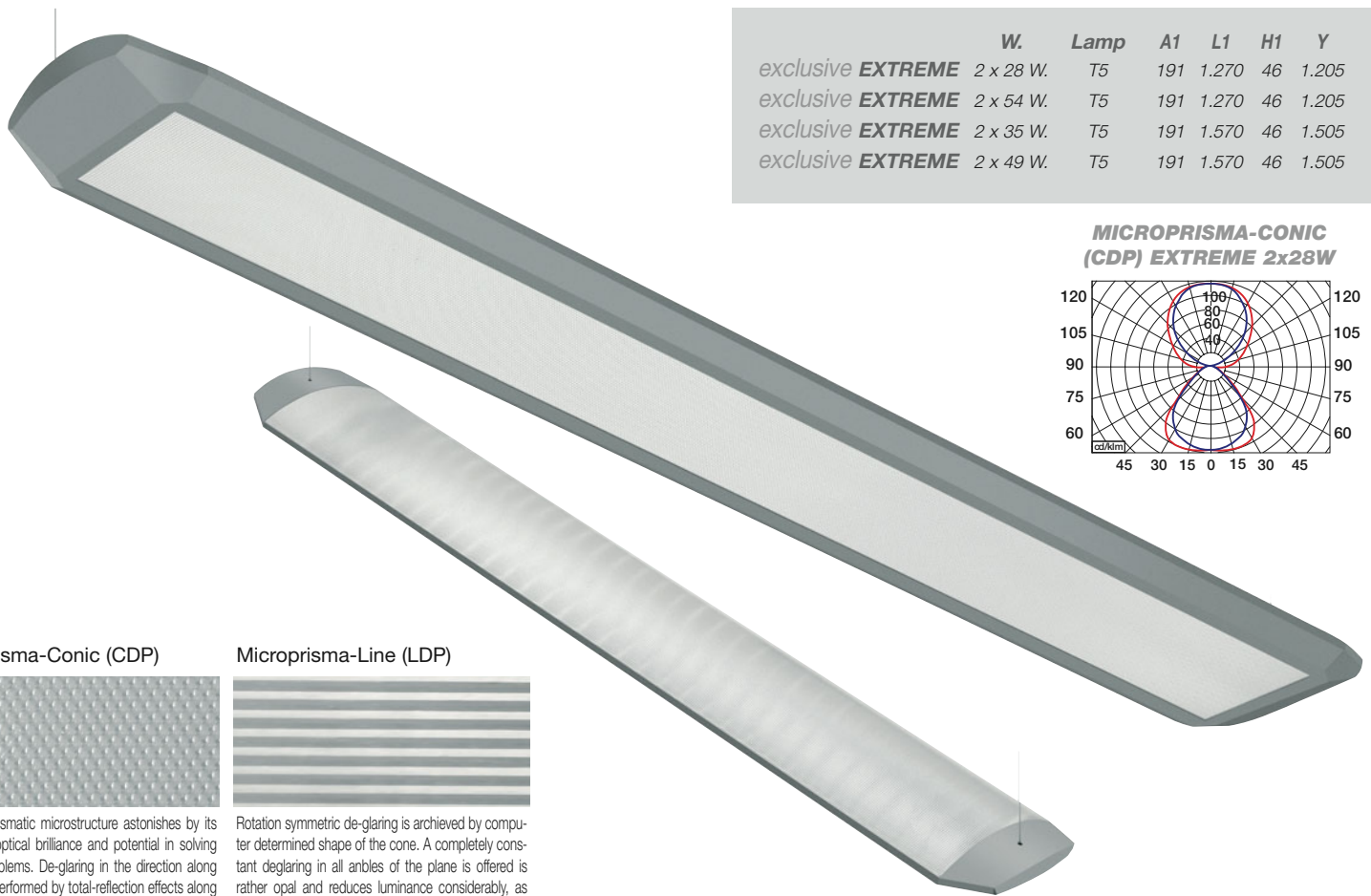
According to norm ENEC-10/VDE.

OPTIC: Polycarbonate with microprismatic conic material (CDP) or linear material (LDP). To make light diffusion more even and prevent individual lamps from being visible, the diffuser can be equipped with a thin polycarbonate foil over it (DIF version).

Top aluminium reflecting surface is standard for all versions.

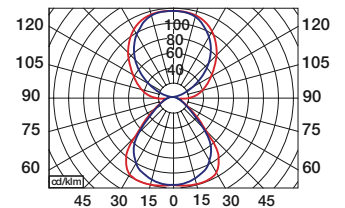
LUMINAIRE ENDINGS: Polycarbonate, finished with electrostatic powder coating, grey colour (RAL 9007) aluminium-fine structure. To access to the luminaire and replace fluorescent lamps, pull out the top diffuser from the luminaire body groove without need of any tools.

SUSPENSION SYSTEM: In 1250 mm. cable length.



	W.	Lamp	A1	L1	H1	Y
exclusive EXTREME	2 x 28 W.	T5	191	1.270	46	1.205
exclusive EXTREME	2 x 54 W.	T5	191	1.270	46	1.205
exclusive EXTREME	2 x 35 W.	T5	191	1.570	46	1.505
exclusive EXTREME	2 x 49 W.	T5	191	1.570	46	1.505

MICROPRISMA-CONIC (GDP) EXTREME 2x28W



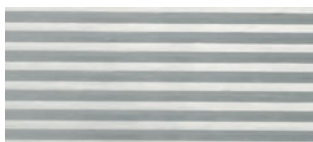
Microprisma-Conic (CDP)



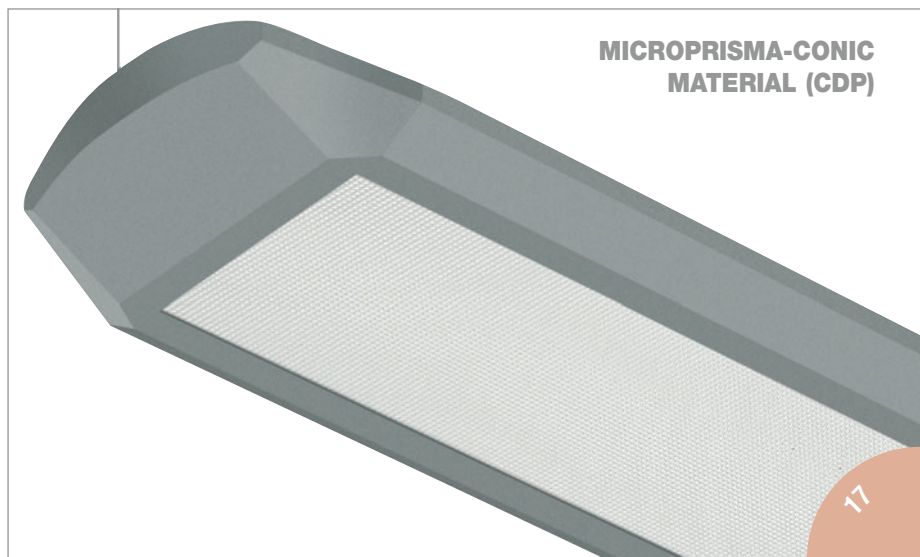
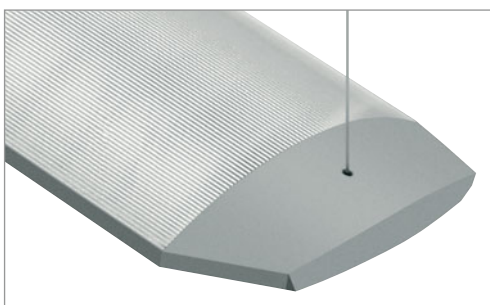
This linear prismatic microstructure astonishes by its outstanding optical brilliance and potential in solving deglaring problems. De-glaring in the direction along the prism is performed by total-reflection effects along the shaped prism structure.

The linear prismatic structure LDP is highly transparent and generates a double image of the fluorescent lamp, what results in a reduced luminance. Furthermore the lamps are invisible beyond a viewing angle of 60°. This is equal to a complete deglaring of the lighting.

Microprisma-Line (LDP)



Rotation symmetric de-glaring is achieved by computer determined shape of the cone. A completely constant deglaring in all angles of the plane is offered is rather opal and reduces luminance considerably, as well in not deglared areas.



MICROPRISMA-CONIC MATERIAL (GDP)