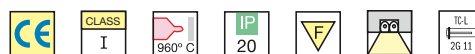


## Recessed Luminaires for TC-L Lamps Low Luminance



**LUMINAIRE HOUSING AND PAINTING:** Modern design with High Out-put. Beveled body.

Made of high quality 0,6 mm anti-corrosion treated steel. All surfaces are coated with powder, thermo-hardened in UV stabilized in

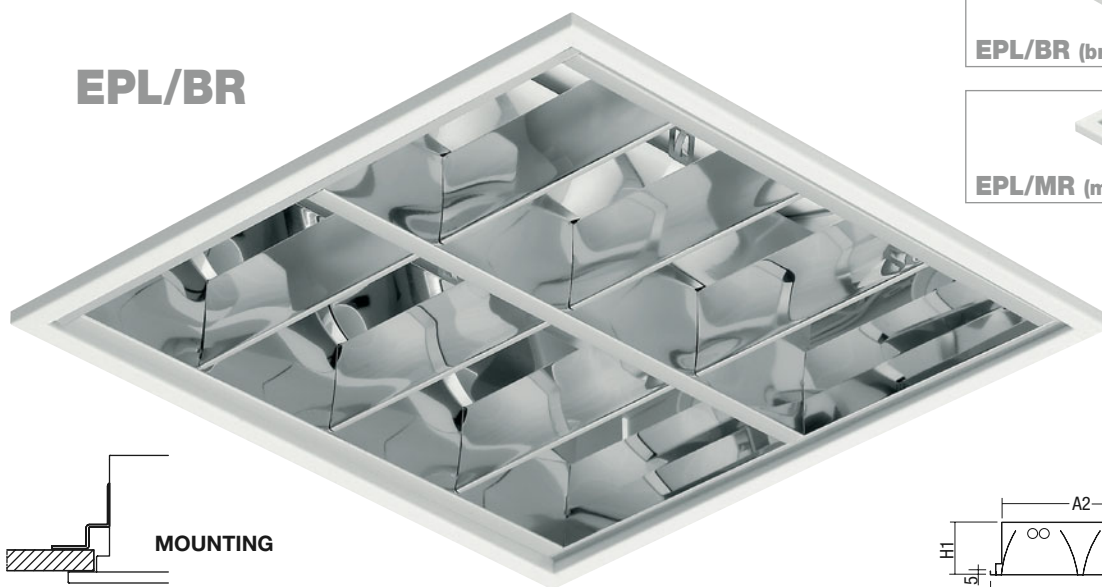
white colour, with ultra high reflectivity characteristics.

According to Norms ENEC-10/VDE.

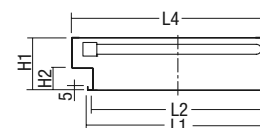
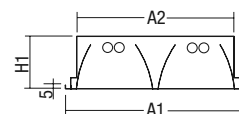
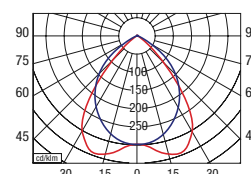
**OPTIC:** Bright double parabolic V-Shaped reflectors made of pure aluminium polished and anodized with a high specular finish.

This anti-iridescent optic renders a "DARK-LIGHT" effect and a homogeneous light projection. Renders high performance and a low luminance level.

### EPL/BR



**EPL/BR 2x24 W.**



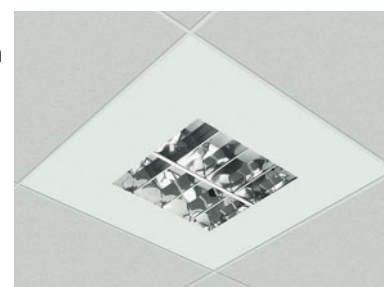
**MOUNTING**

	W.	Lamp	Dimensions						Hole		
			A1	A2	L1	L2	L4	H1	H2	O1	O2
EPL/BR - 2x18W H.F.	2 x 18	TC-L	320	296	320	296	340	90	32	305	315
EPL/BR - 2x24W H.F.	2 x 24	TC-L	320	296	320	296	340	90	32	305	315
EPL/MR - 2x18W H.F.	2 x 18	TC-L	320	296	320	296	340	90	32	305	315
EPL/MR - 2x24W H.F.	2 x 24	TC-L	320	296	320	296	340	90	32	305	315

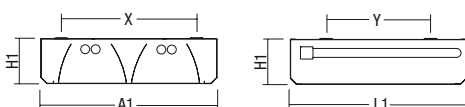
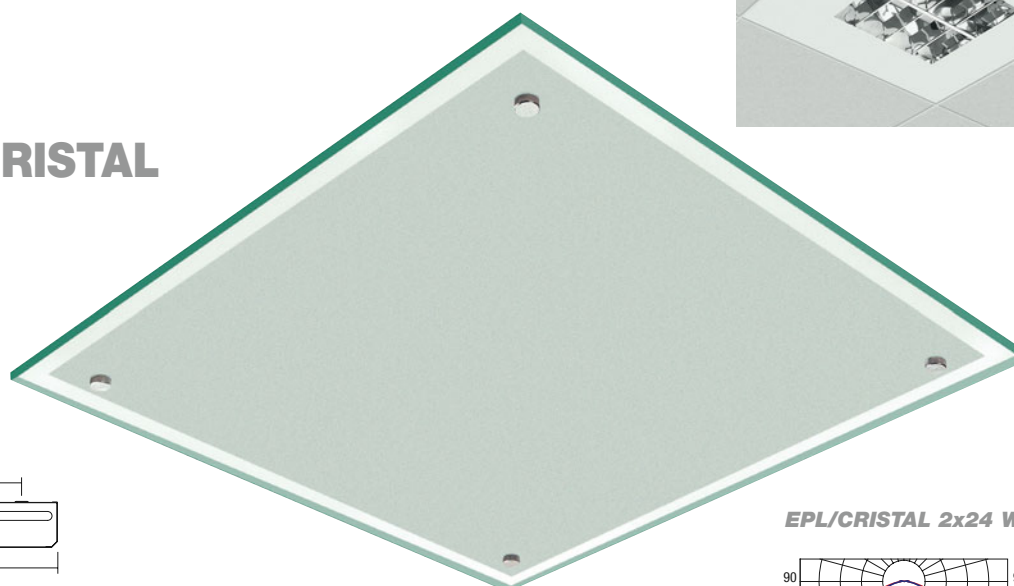
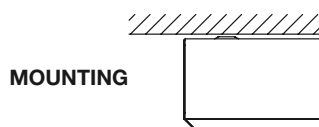
#### ACCESORIES:

Metal plate painted in white colour.

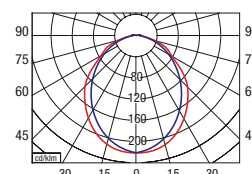
Dimensions 595x595, 620x620



### EPL/CRISTAL



**EPL/CRISTAL 2x24 W.**



	W.	Lamp	Dimensions							Hole			
			A1	A2	A3	L1	L2	L3	L4	H1	H2	O1	O2
EPL/CRISTAL - 2x18W H.F.	2 x 18	TC-L	320	296	357	320	296	357	340	90	32	305	315
EPL/CRISTAL - 2x24W H.F.	2 x 24	TC-L	320	296	357	320	296	357	340	90	32	305	315