

# RECESSED DOWNLIGHTS



## MAXI/DGA



A decorative glass disk with an open circle in the centre is attached to the flange ring fastened by inox screws for embellishment and architectural accent.

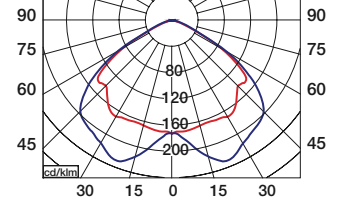
Closed glass DGA-100-195 disk on request.

**LUMINAIRE HOUSING:** Made of high quality 0,6 mm trimmed, galvanized steel sheet. White flange ring made in enamelled steel sheet with thermo-

hardened UV resistant powder coat. Installation using tension clips. WIELAND connector is optional. According to Norm ENEC-10/VDE.

**OPTIC:** High specular polished reflector made of pure aluminium, silver coated by vapour deposition. Reflector is precision formed to render very high light efficiency.

MAXI/DGA-320 2x42W



## MAXI/DGA-320



## MAXI/DGA-190-320

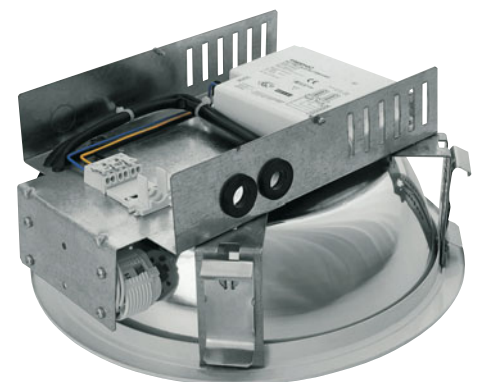


MAXI/DGA-320 - 2x32W - 230V - H.F.  
 MAXI/DGA-320 - 2x42W - 230V - H.F.  
 MAXI/DGA-320 - 3x32W - 230V - H.F.

MAXI/DGA-190-320 - 2x32W - 230V - H.F.  
 MAXI/DGA-190-320 - 2x42W - 230V - H.F.  
 MAXI/DGA-190-320 - 3x32W - 230V - H.F.

MAXI/DGA-200-320 - 2x32W - 230V - H.F.  
 MAXI/DGA-200-320 - 2x42W - 230V - H.F.  
 MAXI/DGA-200-320 - 3x32W - 230V - H.F.

## MAXI/DGA-200-320



Mounting

