

RECESSED DOWNLIGHTS



DEL

TURBO PARABOLIC REFLECTOR



Compact Design, horizontal position for lamps TC-D/TC-DEL.

Open reflector features a six segmented anti-glare louvre optic.

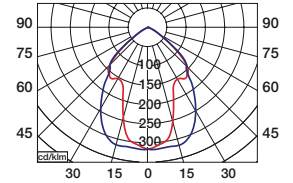
LUMINAIRE HOUSING: Made of high quality 0,6 mm trimmed, galvanized steel sheet. White flange ring made in enamelled steel sheet with thermo-hardened UV resistant powder coat. Installation using tension clips.

WIELAND connector is optional. According to Norm ENEC-10/VDE.

OPTIC: High specular polished turbo reflector made of pure aluminium, silver coated by vapour deposition. Louvre optic reduces glare to <math><200\text{cd/m}^2</math> at 55°, suitable for VDT workstations. Category II. Reflector is precision formed to render very high light

OPTIONAL: Other diametres on request.

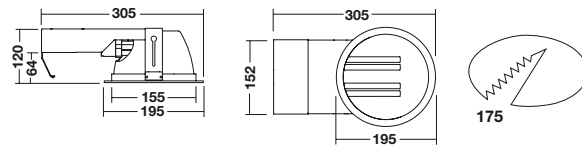
DEL-195 1x13 W.



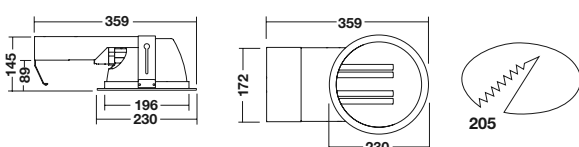
DEL 195



- DEL-195 - 1x13W - 230V
- DEL-195 - 1x18W - 230V
- DEL-195 - 1x26W - 230V
- DEL-195 - 2x13W - 230V
- DEL-195 - 2x18W - 230V
- DEL-195 - 2x26W - 230V



DEL 230



- DEL-230 - 1x18W - 230V
- DEL-230 - 1x26W - 230V
- DEL-230 - 2x18W - 230V
- DEL-230 - 2x26W - 230V

